

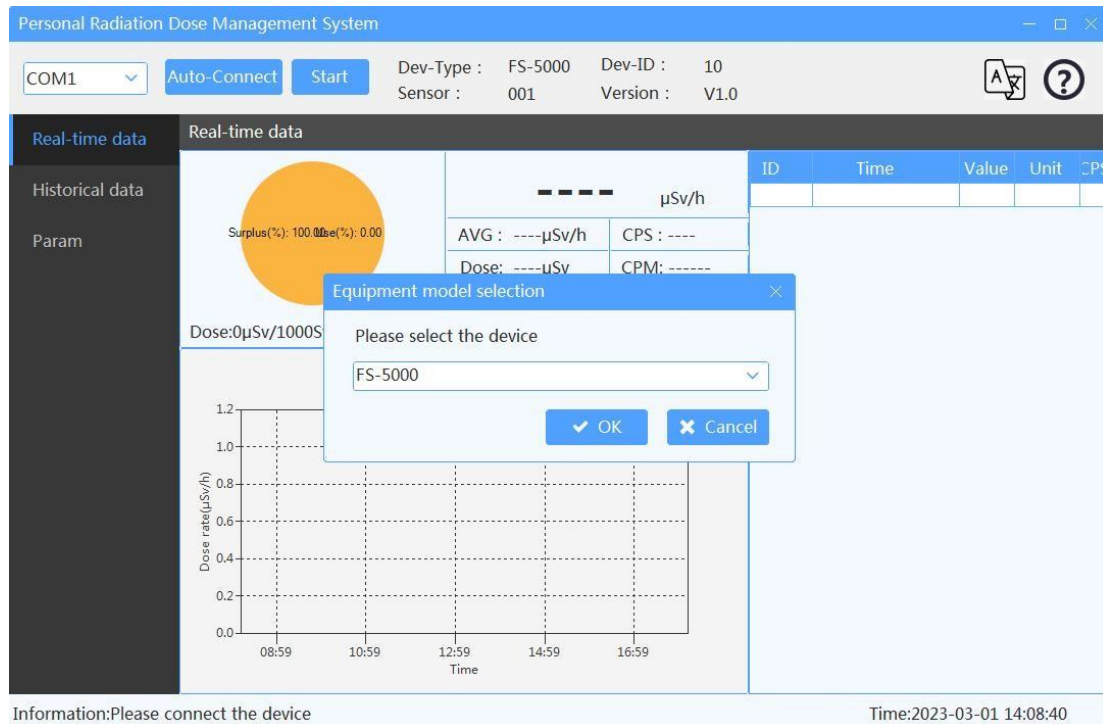
# **Personal Radiation Dose Management System User Manual**

Henan Bosean Electronic Technology Co., Ltd.

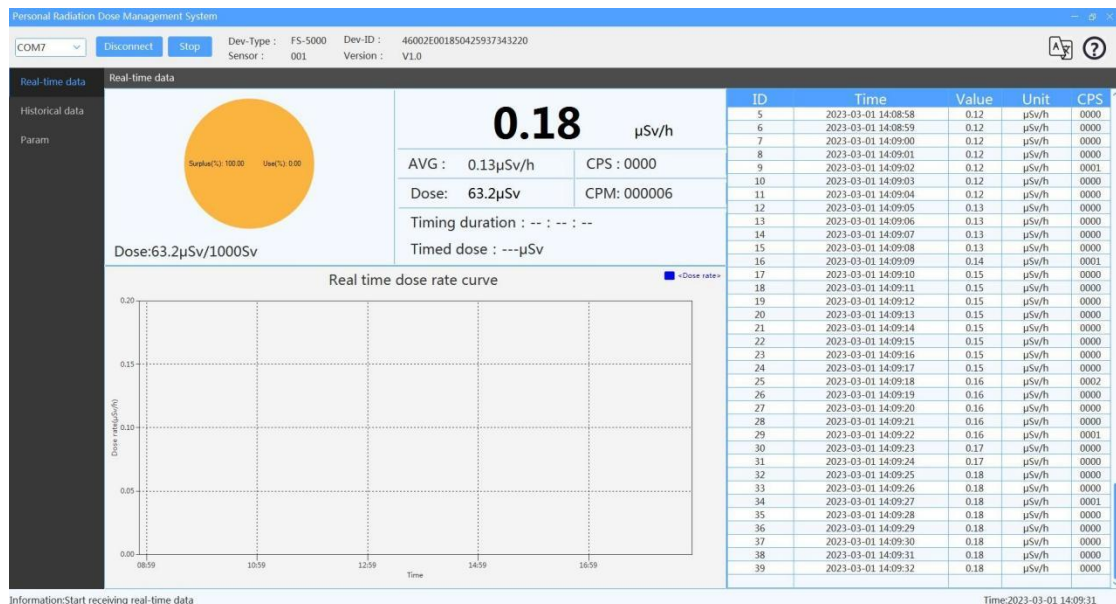
2023-02

Before using the software, please ensure that the device driver installation is successful.

## 1.Real-time data display



1.1 First click the "Auto Connect" button and wait for the software to connect the device. After successful connection, as shown in the figure below.

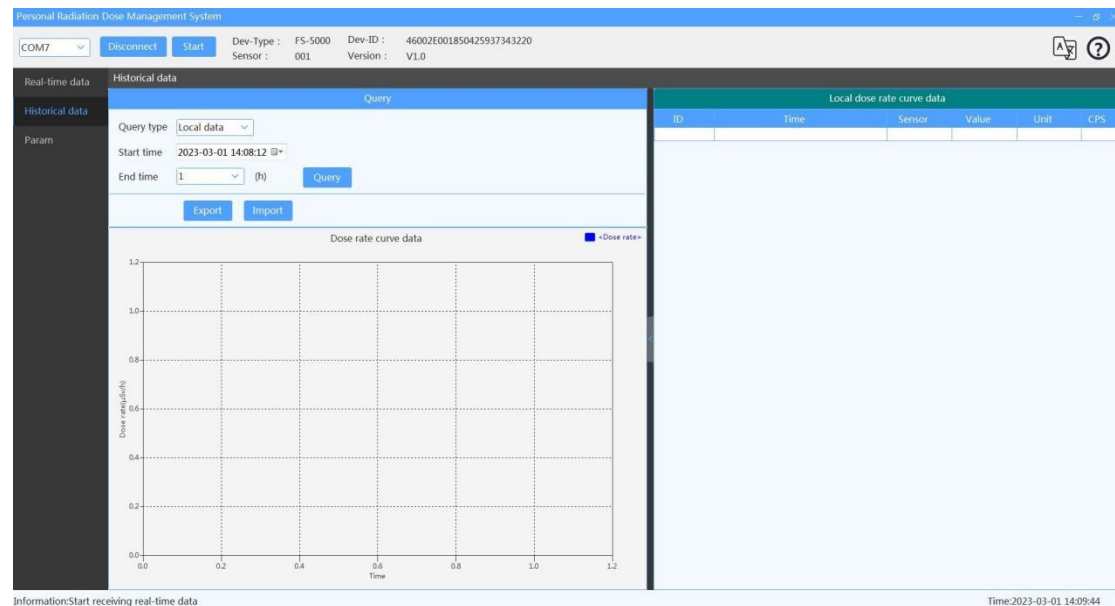


1.2 After the device is connected successfully, the basic information will be displayed and the device data can be received in real time;

1.3 Click "Stop Refresh" to pause the refresh of real-time data, and click "Start Refresh" again to refresh the data again;

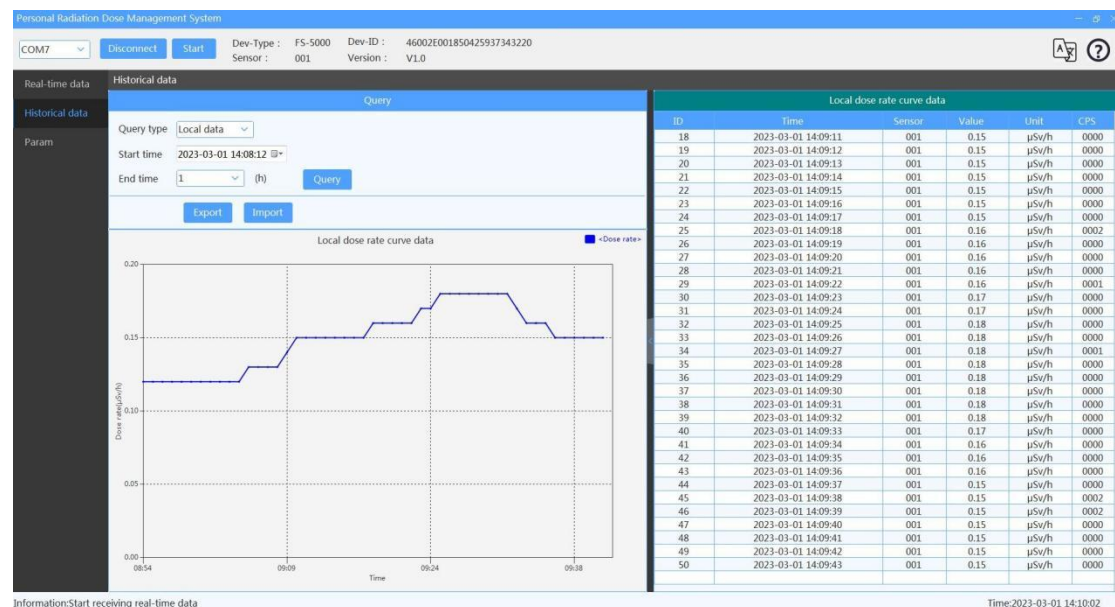
Note: During the operation of real-time data, the system encounters a standby situation, and after recovery, the data may display abnormalities. Just start refreshing the data again.

## 2. Historical data display



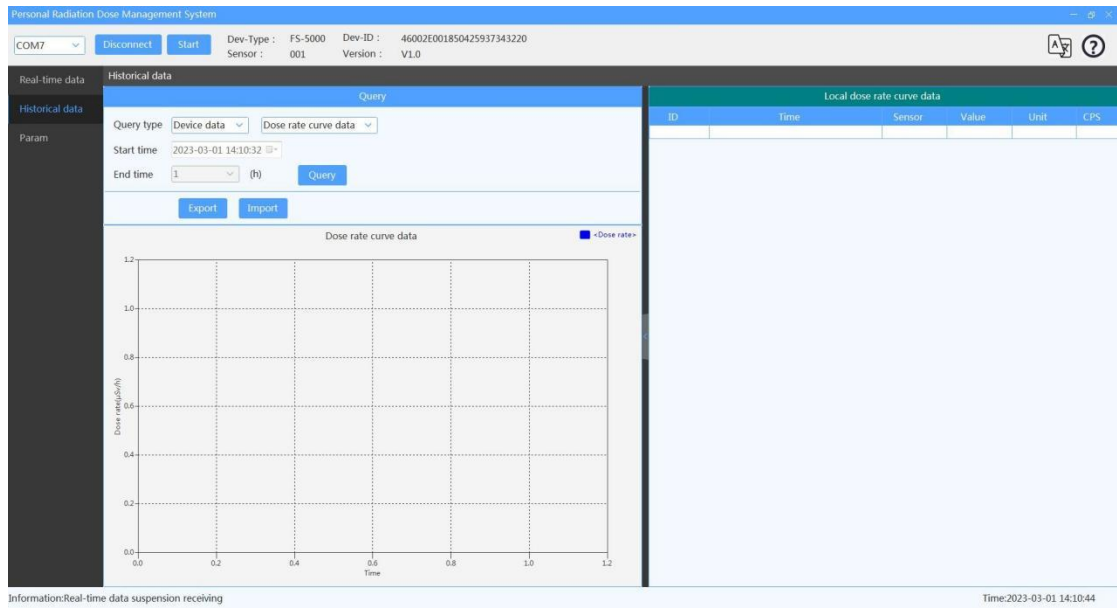
### 2.1 Query local data

Select the start time and the end time, and click the "Query" button to query the data within the selected time period.



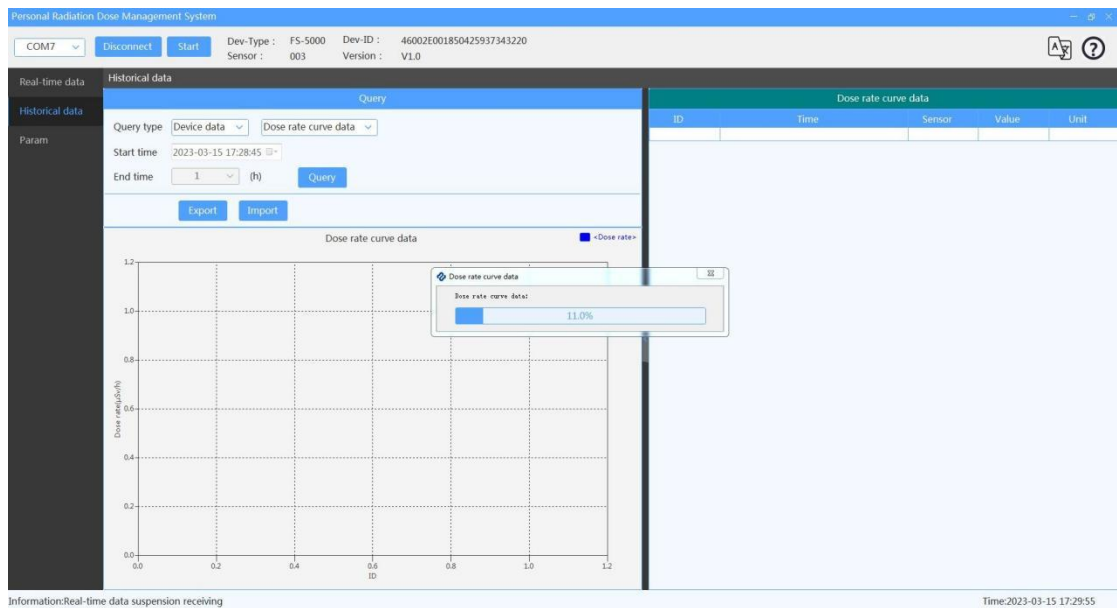
### 2.2 Query equipment data

In the query type selection box, select "Equipment data" to display the secondary selection box, where you can query the equipment dose rate curve data, equipment dose curve data, and equipment alarm data.

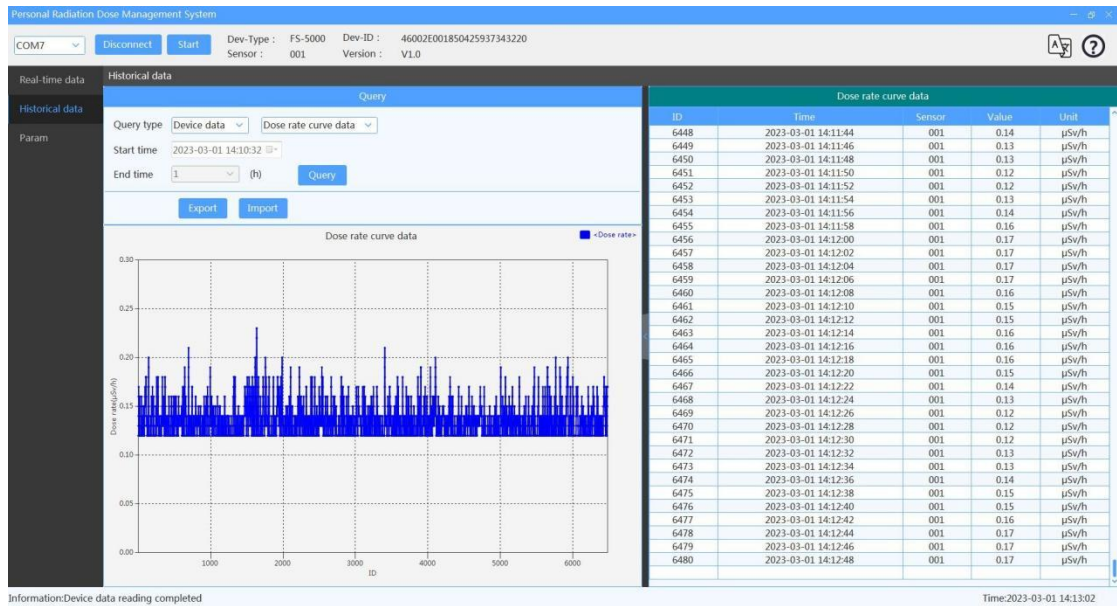


## 2.2.1 Query equipment dose rate data

Select the equipment data, select the dose rate curve data, and click the "Query" button. Because the data volume may be large, please wait for the query to complete.

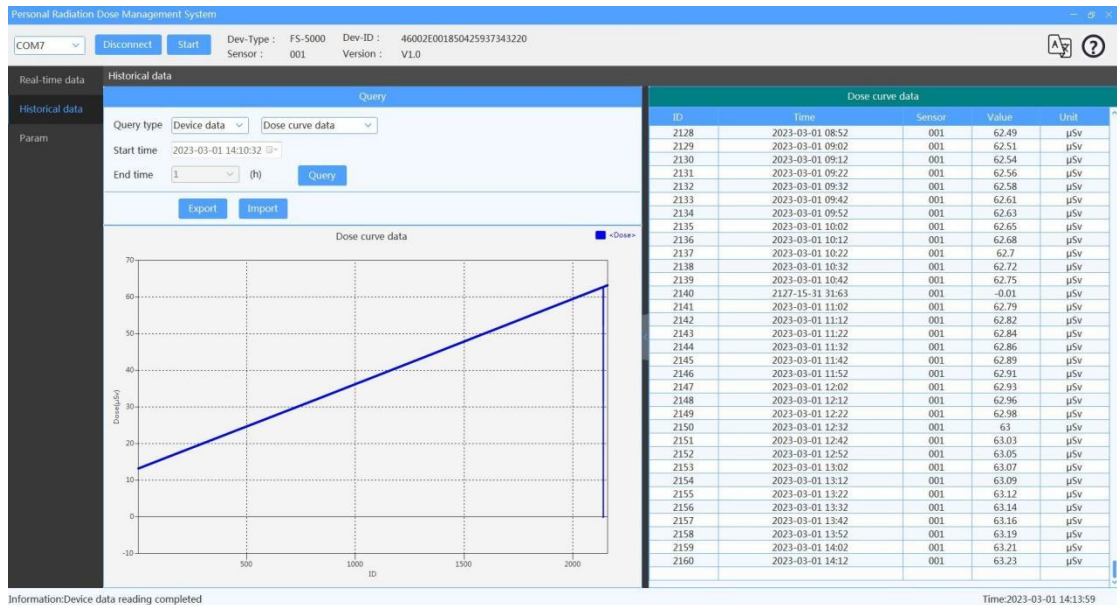


After the query, as shown in the following figure:



## 2.2.2 Query equipment dose data

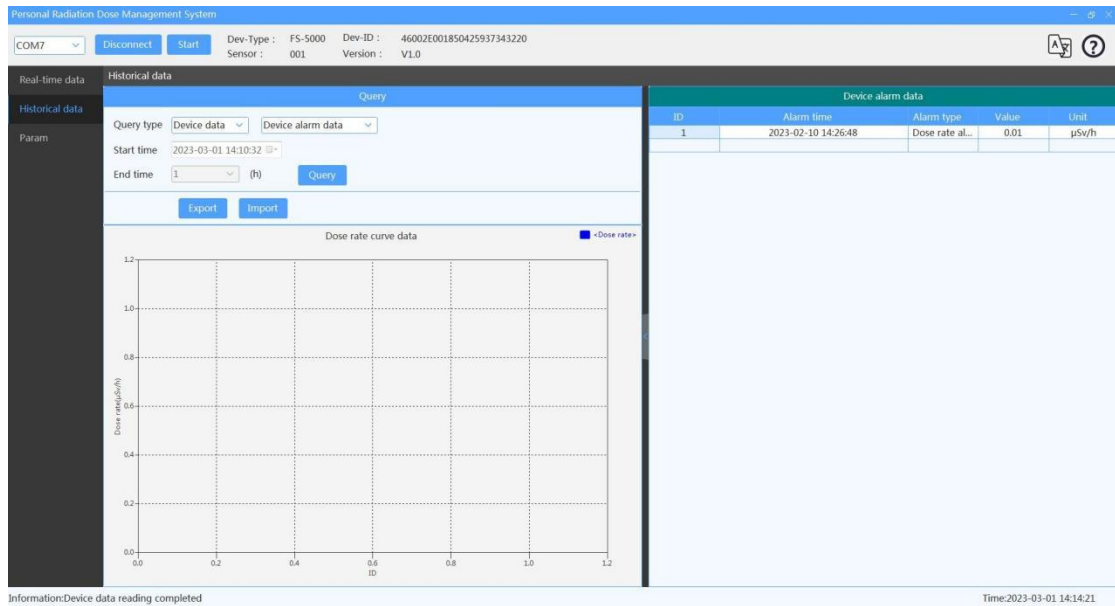
Select the equipment data, select the dose curve data, and click the "Query" button. Because the amount of data may be large, please wait for the query to complete, as shown in the figure below.



## 2.2.3 Query equipment alarm data

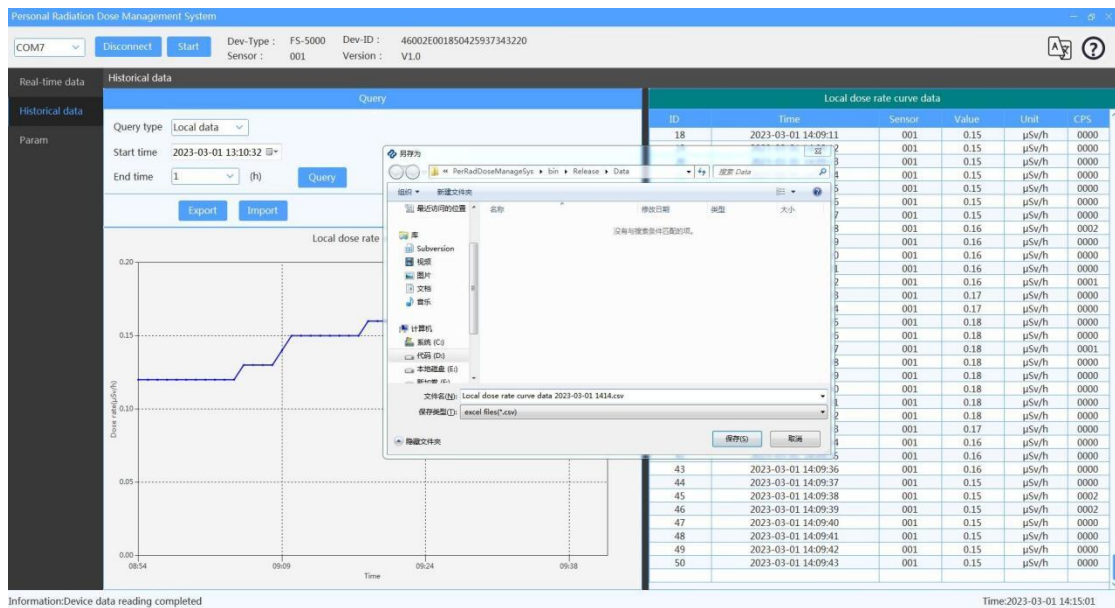
Select the equipment data, select the alarm record data, and click the "Query" button. Because the data volume may be large, please wait for the query to complete, as shown in the figure below.





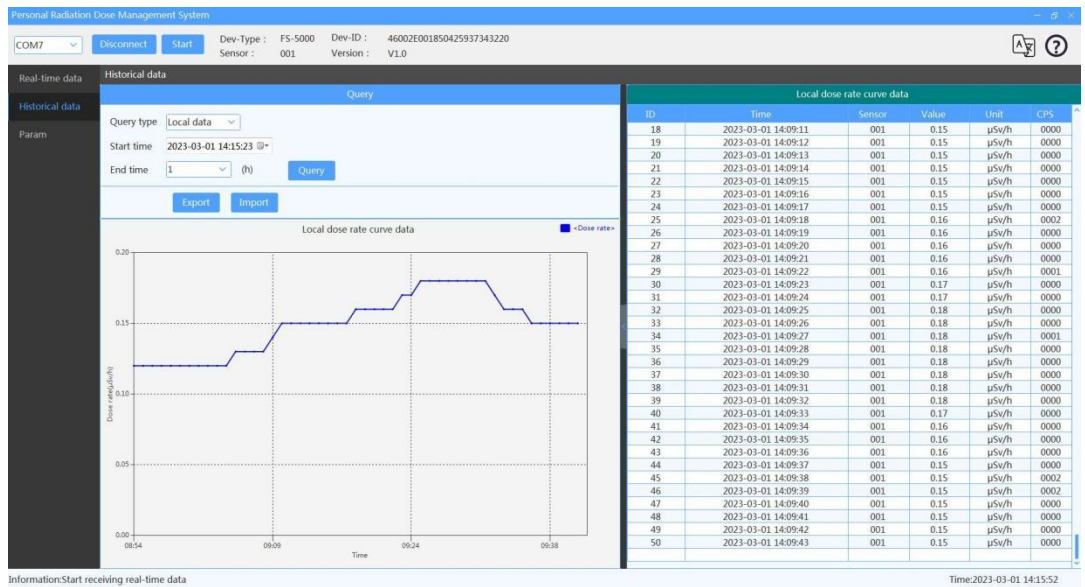
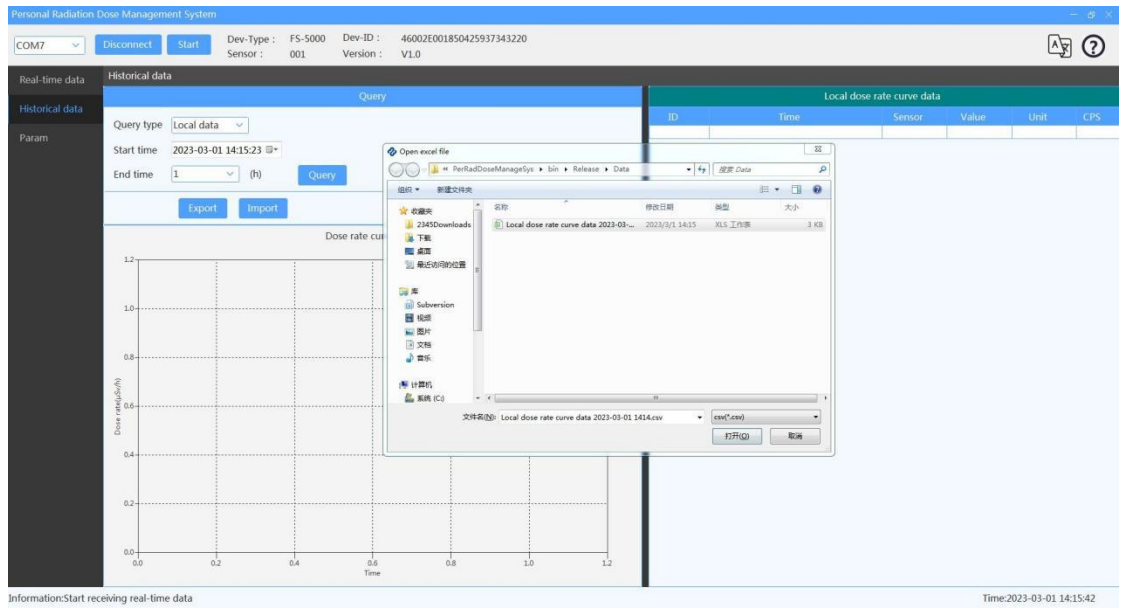
## 2.2.4 Data export

Take local data as an example. After querying the data, you can click the "Export" button to export the data.



## 2.2.5 Data import

Import the data exported by the software into the software again. As shown in the figure below, click the "Import" button, select the file, and import it into the software.



## 3. Equipment parameter setting

The screenshot displays the 'Personal Radiation Dose Management System' interface. At the top, there's a status bar with 'COM7', 'Disconnect', and 'Start' buttons, along with device information: 'Dev-Type: FS-5000', 'Sensor: 003', 'Dev-ID: 46002E001850425937343220', and 'Version: V1.0'. The main area is divided into several sections: 'Threshold' (Dose total: 1000 Sv, Dose rate: 2.50 μSv/h, Dose: 1000 μSv), 'Alarm' (Alarm lamp, Alarm sound, Vibration, Particle sound, all set to Off), 'Data management' (Clear total dose, Clear dose rate curve data, Clear dose curve data, Clear alarm record, Restore factory setting), 'Timed dose duration setting' (Timed dose: Off, Timed time: 004 : 00 : 00), 'Backlight setting' (Brightness: 3, Backlight time: 003 x10), and 'Other' (Mode: Long endurance mode, Style: Concise style, Coefficient(%): 100). Each section has a 'Set' button. A sidebar on the left shows 'Real-time data', 'Historical data', and 'Param' (selected). The bottom status bar shows 'Information: Language set successfully' and 'Time: 2023-03-15 10:28:27'.

### 3.1 Threshold setting

Set the total dose, dose rate threshold, dose threshold and other equipment parameters.

### 3.2 Alarm setting

Set the ON/OFF status of equipment alarm light, alarm sound, vibration alarm, particle sound, etc.

### 3.3 Data management

Clear equipment cumulative dose, dose rate curve data, dose curve data, alarm records and other data. And restore factory settings.

### 3.4 Timed dose duration setting

Set the timing dose switch and timing duration.

### 3.5 LCD backlight setting

The setting of backlight intensity and backlight duration.

### 3.6 Other settings

For the setting of operation mode, interface style, calibration coefficient and equipment time, you can also read back the equipment parameters.


Note: Click "Read back device parameters" to check whether the setting parameter information is correct.



## 4. Other operations


### 4.1 Language switching



In the interface, the button  is the language switch button. Select the corresponding language, and the interface language type will be automatically switched.

### 4.2 Help documents



In the interface, the button  is help documents and related functions.

Select the model selection and load the interface display of the corresponding model.

Select the help document to open the user manual automatically.

Select the About function to open the About interface. As shown below.

